

**FEATURES**

- Easy to read numbers
- Loop powered; no external supply required
- Field calibration adjustments
- Compact size

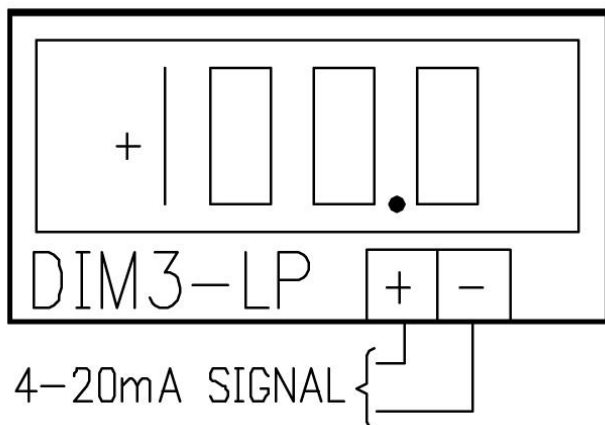
**APPLICATIONS**

- Temperature indication
- Humidity indication
- Percentage of operation display
- Differential pressure indication

**DESCRIPTION & OPERATION**

The DIM3-LP is a 3½ digit LCD panel meter that is loop powered. The DIM3 will display 000 to 1999 with the decimal available in any of the three possible positions. The DIM3 has larger digits that are easy to read at a distance.

The DIM3-LP is a 2 wire panel meter that connects in series with the DC power supply, 4-20mA transmitter, and the load device. The display used on the DIM3-LP is Datal's DMS-30 series digital LCD panel meter. A sub-board is attached to the back of the meter that houses the voltage regulator and input scaling circuitry. No external or separate power supply is required other than the 4-20mA loop transmitter supply. The meter is factory calibrated to your specifications, however ZERO and SPAN potentiometers are available for field adjustments. See field calibration and adjustments for instructions.

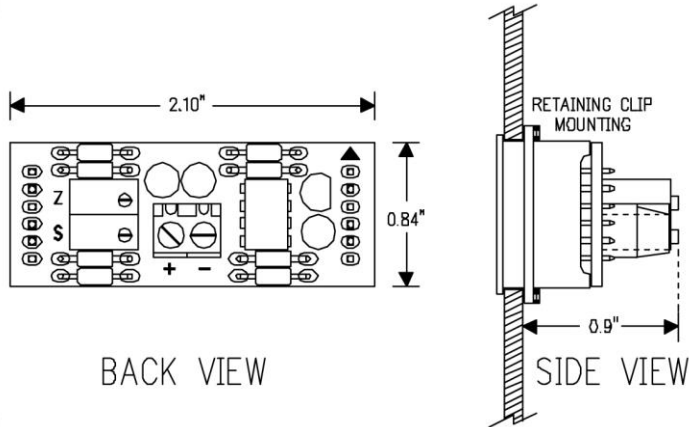
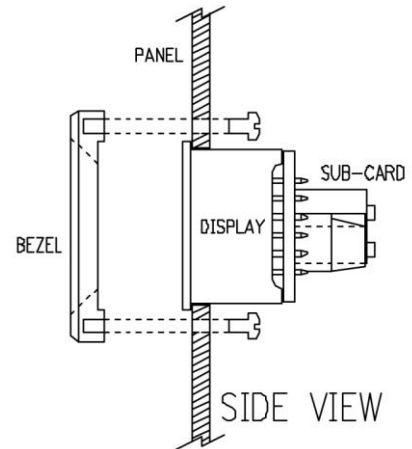
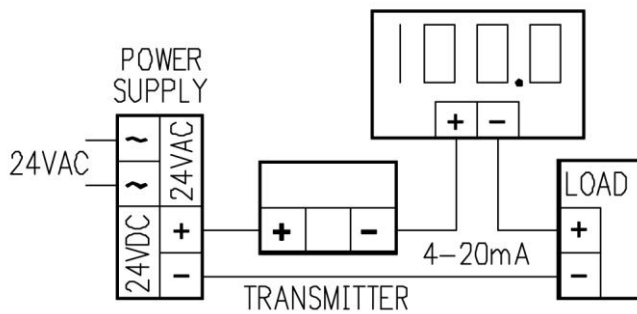
**WIRING CONFIGURATION****SPECIFICATIONS**

SIZE:	2.17"L x 0.92"W x .1"H
MOUNTING:	Mounting through 2.12"W x 0.88"H rectangular opening with a retaining clip or bezel option. See physical configuration
POWER:	4-20mA loop powered
INPUT SIGNAL:	4-20mA
INPUT IMPEDANCE:	≤91Ω
LCD DISPLAY:	Datal part # DMS-30LCD 0.4" high 3 1/2 digit LED module
OUTPUT:	3 ½ digit display with optional Decimal point setting
ADJUSTMENTS:	Zero & span ± 20%
ACCURACY:	0.1% with linear input signal
AMBIENT TEMPATURE:	0 to 60°C

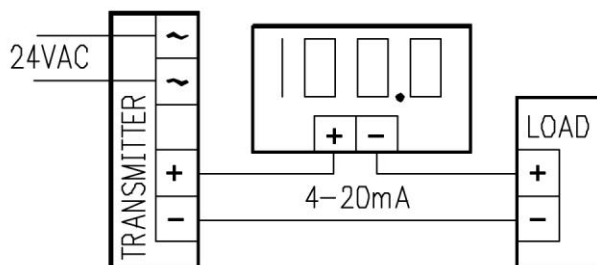
**ORDERING INFORMATION**

**DIM3-LP/XXX/XXX-XXX**

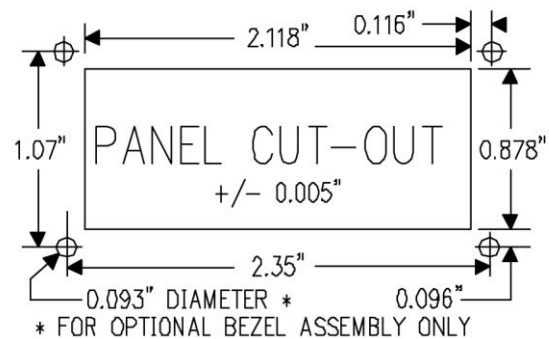
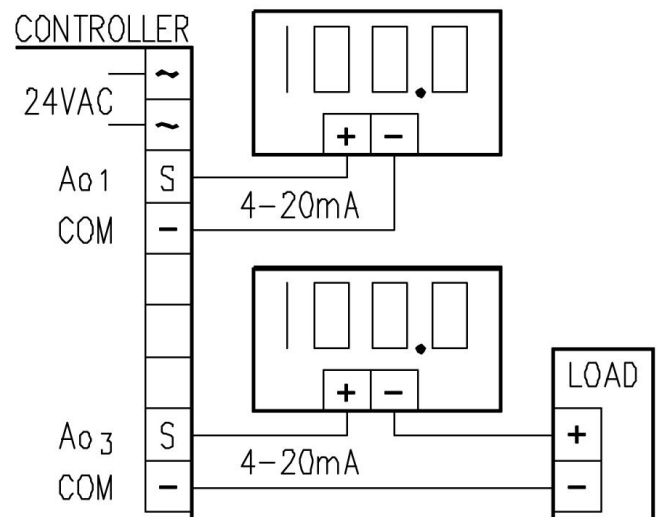
└─ Display Range  
└─ Decimal Position Option

**PHYSICAL CONFIGURATION****BEZEL MOUNTING DETAIL****APPLICATION 1  
TWO WIRE HOOK UP**

The DIM3 can be connected in series with the 4-20mA transmitter and load device in a standard two wire hook-up configuration.

**APPLICATION 2  
4 WIRE HOOK UP**

The DIM3 can be connected in series with the four wire 4-20mA transmitter and the load device. The DIM3-LP draws its power from the 4-20mA loop transmitter.

**PANEL CUTOUT DETAIL****TYPICAL CONTROLLER OUTPUT APPLICATION**

The DIM3 can be connected to the 4-20mA output of a controller or in series with the controller and load device